

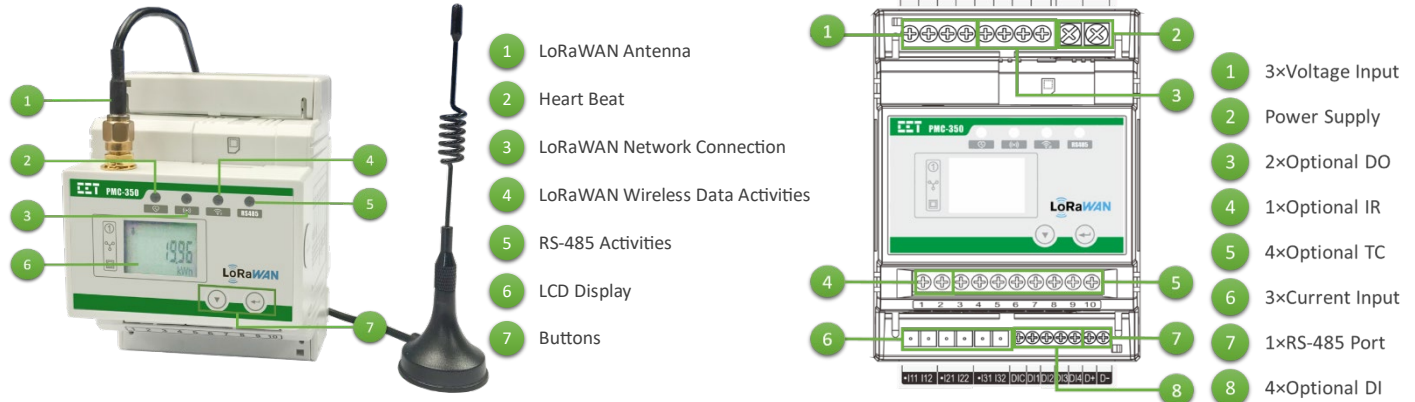
PMC-350-C Quick Start Guide

Version 1.01

Package Contents

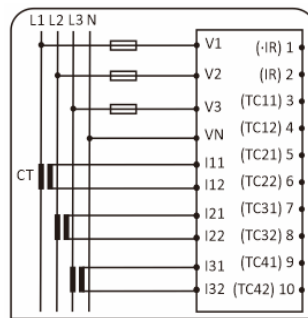
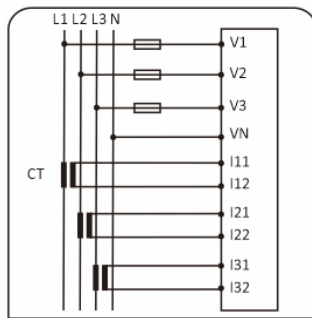
- PMC-350-C Meter with all plug-in connectors installed
- Factory Test Report
- CD with PMC-350-C User Manual
- Quick Start Guide (this document)

Meter Overview



PMC-350-C
1801103096

Model: PMC-350-CSCCT525BT7E
PS: 95-250V ~, 47-440Hz, 3W, OVC III
Voltage: 277V 3~L-N, 480V 3~L-L, CAT III
Current: 40mA
Freq.: 45-65Hz



Warning: Installation and maintenance should only be performed by qualified and competent personnel who have been properly trained to handle high voltage and current devices in accordance with local and national electrical codes.

Hazardous voltage can cause electric shock, burn or explosion. Disconnect and lockout power source, open all PT secondaries and short all CT secondaries before servicing. Failure to observe proper precaution may result in serious injury or death.

SN: 1801103096 DevEUI: 0095690E000005D5

Serial Number Label

Wiring Label

Wiring Label (1xIR+4xTC)

Warning Label and SN & DevEUI Label

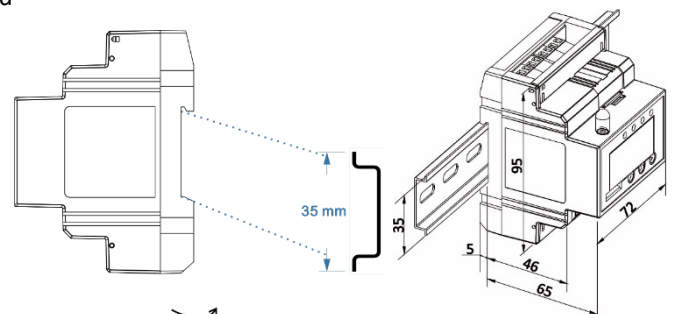
Using the Front Panel Buttons

<▼>	
Data Display Mode	The Default Display shows the kWh Import measurement under the Energy menu. Pressing this button scrolls through the available measurements in this menu.
Setup Configuration Mode	Before an item is selected, pressing this button scrolls to the next setup parameter. If the selected parameter is a numeric value, pressing this button increments the selected digit. If the selected parameter is an enumerated value, pressing this button scrolls through the selection list.
<↔>	
Setup Configuration Mode	Pressing this button for two seconds toggles between Data Display mode and Setup Configuration mode. Once inside the Setup Configuration mode, pressing this button selects a parameter for modification. Once selected, the parameter value blinks while it's being changed. If the selected parameter is a numeric value, the cursor is at the right most digit by default. Pressing this button moves the cursor one position to the left. If the cursor has reached the left most digit, pressing this button again will save the current numeric value into memory.

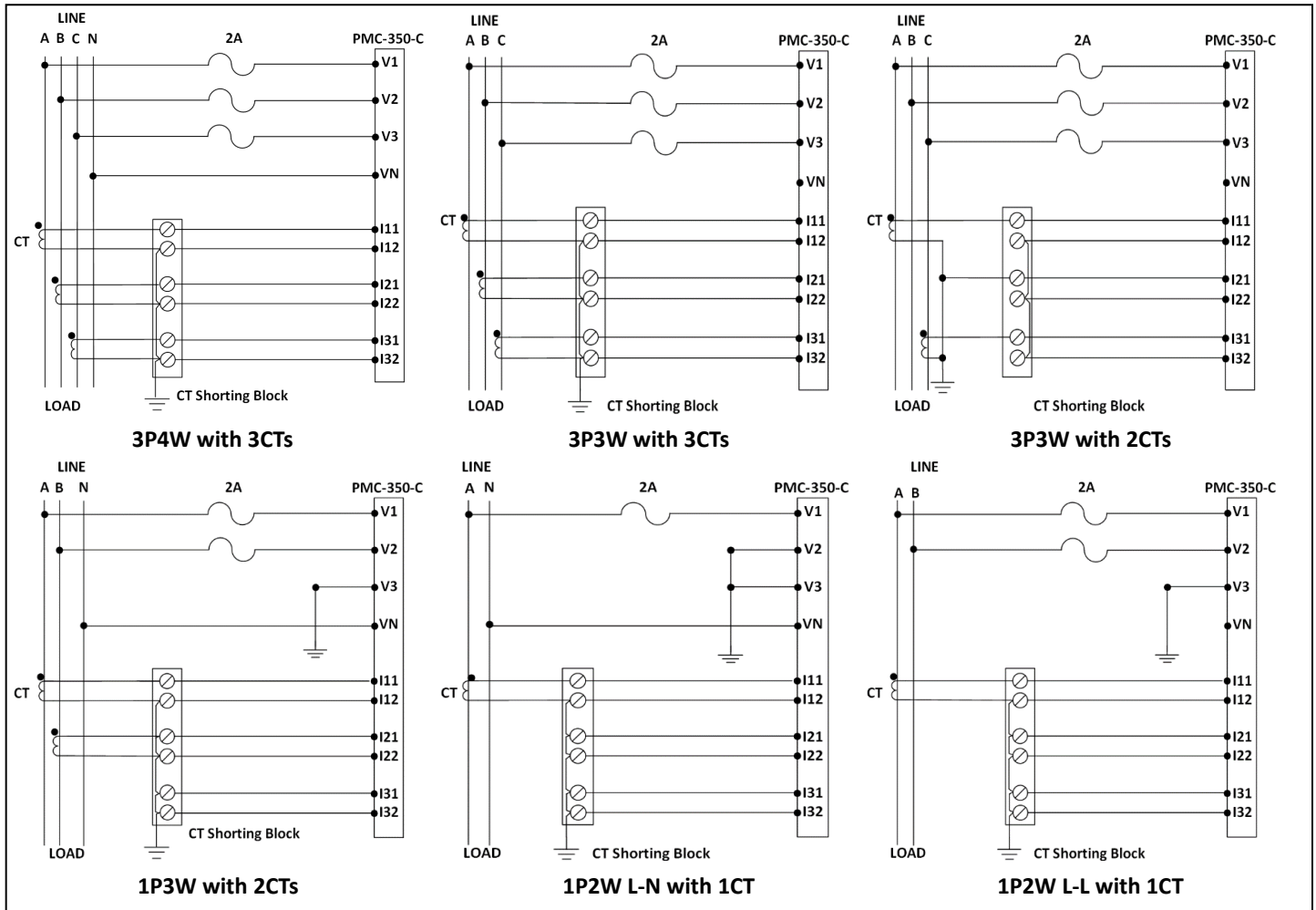
Mounting the Meter

The PMC-350-C should be installed in a dry environment with no dust and kept away from heat, radiation and electrical noise source.

- Before installation, make sure that the DIN Rail is already in place
- Move the DIN Rail locking clip at the back of the PMC-350-C downward to the "unlock" position
- Align the top of the mounting channel at the back of the PMC-350-C at an angle against the top of the DIN rail as shown in figure right
- Rotate the bottom of the PMC-350-C towards the back while applying a slight pressure to make sure that the device is completely and securely fixed on to the DIN Rail
- Push the DIN Rail locking clip upward to the "lock" position to secure the PMC-350-C on to the DIN Rail

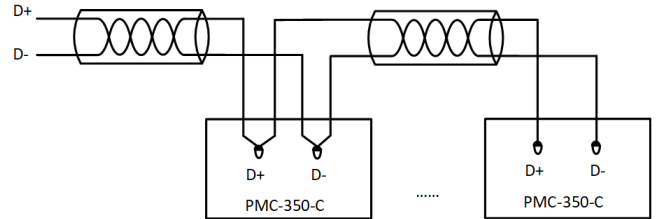


Wiring Diagrams



RS-485 Wiring

- The PMC-350-C provides one standard RS-485 port that supports the Modbus RTU protocol. Up to 32 devices can be connected on a RS-485 bus. The overall length of the RS-485 cable connecting all devices should not exceed 1200m.
- If the master station does not have a RS-485 communications port, a RS-232/RS-485 or USB/RS-485 converter with optically isolated outputs and surge protection should be used.



LoRaWAN Connection

- The DevEUI information can be found on a label underneath the Front Panel. The AppEUI and AppKey should be pre-configured at the factory according to the customer's specification.



Basic Setup Parameters

Menu	Parameters	Description	Range/Options	Default
PW	Password	Enter Password	0 to 9999	"0"
TYPE	Wiring Mode	The wiring connection of the meter	DEMO/1P3W/3P3W/3P4W/1P2W L-N/1P2W L-L	3P4W
PT1	PT Primary	PT Primary	1 to 1,000,000 V	380 V
PT2	PT Secondary	PT Secondary	1 to 690V	380 V
CT1	CT Primary	CT Primary	1 to 30,000A	5 A
CT2	CT Secondary	CT Secondary	1 to 5A	5 A
SCCT	SCCT Type	SCCT Type	100/200/400/800/1600	100
ID	Meter Address	Meter Address	1-247	100
BD	Baud rate	Data rate in bits per second	1200-38400 bps	9600
CFG	Comm. Port Configuration	Data Format	8N2/8O1/8E1/8N1/8O2/8E2	8E1